



**Once In A Lifetime Safari LLC**  
8574 119<sup>th</sup> St N  
Seminole FL 33772 USA  
Telephone 727-415-3449  
Info@onceinalifetimesafari.com

**ONCE IN A LIFETIME**  
**ITINERARY**  
**7 DAY NAIROBI CITY TOUR-KENYA SAFARI**  
**&**  
**8 DAY TANZANIA SAFARI**

**Day 01 – (Nairobi)**



Upon your arrival at the Jomo Kenyatta International Airport in Nairobi and after clearing customs and immigration formalities, you will be met by a Once In A Lifetime Wildlife Safari Representative.

After departing the Jomo Kenyatta International Airport, our agent will transfer

you to the Fairmont Norfolk Hotel for a relaxing overnight stay in Nairobi.

**OVERNIGHT AT FAIRMONT NORFOLK HOTEL**

**Day 02 – (Nairobi Tour of Giraffe Center and Bomas)**

Following breakfast (approximately 9:00AM); we will depart the Fairmont Hotel for a day long exciting visit within the city of Nairobi. During the 9:00 hour, we will visit the main areas of interest in the heart of Nairobi city.

These areas will include the colorful market and shopping bazaars, the historic areas such as the parliament buildings and Mausoleum. As you progress through this historical city, we will stop at a view point where you will capture a clear aerial view of the entire City.

At 11:00, we will visit the Daphne Sheldrick Elephant orphanage. A tour of this exotic Elephant sanctuary will shed a powerful insight into the challenges and plight of the mighty Elephant and this fascinating organization. While viewing these enormous animals, you will find that they are extremely habituated to their surroundings. Our trip will be timed so you arrive at the orphanage for feeding time which is between the hour of 11:00 and 12:00.





Around 12:00, we will travel to the Nairobi Giraffe Centre. This is a sanctuary established to house the rare and beautiful Rothschild Giraffe. You will be able to partake in the feeding of the giraffes, resident warthogs and have plenty of photography opportunities. You will have approximately one hour to explore this unique centre.

Once you have completed your tour of the Giraffe Centre, you will be driven to Mamba Village for a delicious lunch. The Mamba village is encompassed within a cool and beautiful environment where you will see wild crocodiles, an ostrich farm and view the precious sculptures which are lined all over the Mamba village. Our

visitation to this wonderful place will be for approximately one hour.

Following your visit and lunch, we will drive to the Bomas of Kenya. You will arrive at approximately 14:30 at this unique cultural area of Nairobi. The Bomas (traditional homesteads) reflect Kenya's cocktail of cultures. This region has been faithfully recreated for visitors to see and feel the actual village life of the local citizens. During your 1 ½ hour visit, you will partake in an entertaining afternoon that will display traditional dances and folk songs from the better known tribes of Kenya.

At 16:00 and after becoming more familiar with the traditional culture of Kenya, you will be escorted to the original home of the famous Danish Authoress Karen Blixen. Ms Blixen was one of the main individuals from the movie Out of Africa. Visiting this historical home will provide you with a unique opportunity to learn more about this widely respected person. Surrounding her spacious bungalow, are beautiful gardens with spectacular views of Ngong Hills where Blixen boyfriend Denis Finch Hatton remains were laid to rest on May 14 1931.



Once you have completed your Nairobi City tour, your Once In A Lifetime Safari Agent will transfer you back to the Norfolk Hotel for your overnight stay.

**OVERNIGHT AT FAIRMONT NORFOLK HOTEL**

**(B, L)**

### **Day 03 – (Nairobi / Lake Naivasha / Hell's Gate National Park)**

After you wake and following Breakfast, you will depart from the Norfolk Hotel and start your journey to Naivasha. After driving approximately 70 km's, we will arrive at Hell's Gate National Park. Hell's Gate has a very unique terrain among Kenya's parks. As you enter the park, you will be allowed to walk unguided across the grounds. During your exploration you will observe dramatic scenery, looming cliffs, gorges and basalt columns.



As you progress on your adventure, it is common to see lions and leopards lurking behind many corners of the area. This opportunity is why Hell's Gate is one of the most exciting places to visit. Marking the eastern entrance of Hell's Gate Gorge is Fischer's Tower, one of the park's most popular rock-climbing sites.

During your exotic exploration, your Once In A Lifetime wildlife representative will stop so you can enjoy a wonderful picnic lunch. Once you have completed your Hell's Gate expedition, you will escort to the wonderful

Lake Naivasha Sopa Resort for dinner and your overnight stay.

**OVERNIGHT AT LAKE NAIVASHA SOPA RESORT**

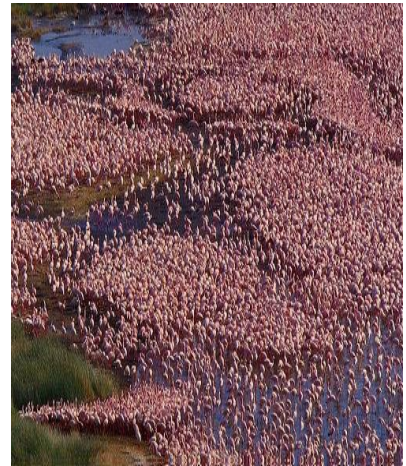
**(B, L, D)**

#### **Day 04 – (Lake Naivasha / Lake Nakuru)**

At 9:00 and after an early morning breakfast at the Lake Naivasha Sopa Resort, we will depart and proceed southward to Lake Nakuru National park. The distance to Lake Nakuru from Amboseli is 70 km's and will take approximately 1 ½ hours.

During your journey to this beautiful National Park, you will have the opportunity to enjoy stunning views of the vast Kenya countryside. Upon your arrival at the Lake Nakuru, you will be transferred to the Sarova Lion Hill Lodge. Following check-in, you will where you will enjoy a wonderful lunch.

Following lunch, your Once In A Lifetime Safari wildlife guide will drive you to the lakebed where you will begin your expedition through this unique National Park. Lake Nakuru is famous for its clouds of flamingos, Black Rhino's, as well its unusual tree climbing Lions. Over 1 million flamingos in the park literally turn the shores of Lake Nakuru pink. This is a delight for ornithologists, scientists, and wildlife filmmakers.



This National Park covers 188 square kilometers of land of great ecological diversity - from lake water, woodland, bush grassland, to rocky ridges. Upon your arrival at Lake Nakuru, you will start your exploration of this marvelous National Park.



A variety of exotic wildlife can be easily observed through-out the entire park. This wildlife includes Water Buffalo, Leopard, Lion, Rothschild's Giraffe, Black and White Colobus Monkey in the forests and animals like the Eland, Steinbok, Impala, Chandler's Reedbuck, and Dikdik in the Bushland. Finally, Rock Hyrax and the Klipspringer are found on the cliffs and escarpment.

You will enjoy an afternoon game drive in our overland vehicle to savor the feast of wildlife on the lake's shores and on the cliffs of Lake Nakuru. Upon completion of your

Safari drive, your wildlife representative will bring you back to the Lion Hill lodge where you will enjoy a delicious dinner.

**OVERNIGHT AT SAROVA LION HILL LODGE**

(B, L, D)

**Day 05 – (Lake Nakuru National Park / Masai Mara National Reserve)**

After your early morning breakfast at the Lion Hill Lodge, you will depart the flamingo fringed Lake Nakuru and proceed southwards and turn right at Maai Mahiu to ascend up and over the top of the Mau Escarpment then proceeding to the Masai Mara National Reserve. This adventurous drive is approximately 230 km's and will take 4 hours.

Outstanding in every way, the Masai Mara National Reserve is the most well known game park in Kenya and is located on the northern edge of the Serengeti Plain. Here you can see wide varieties and vast volumes of wildlife, 57 of the 450 recorded bird species are birds of prey. There are breathtaking areas of beautiful grasslands, rolling hills, wonderful acacia trees and a variety of lush bush areas.

Upon arrival at Masai Mara, your Safari Representative will drive you to Mara Sopa Lodge located within the Masai Mara Reserve; lunch will be served followed by an afternoon game drive.

During your drive, you most likely will see Cheetahs, Hyenas, Giraffes, Lions, Hippos, Leopards, Jackals, Wildebeests, Gazelles, Impalas, Hartebeests, Vultures, Eagles, Falcons, Ostriches, Zebras and much more. Both lunch and dinner will be served at Sopa Lodge.



(B, L, D)

**OVERNIGHT AT MARA SOPA LODGE**

**Day 06 – (Maasai Mara Village / Masai Mara National Reserve)**

After a leisurely breakfast, we will depart the Mara Sopa Lodge facility and travel a short distance to a unique Maasai Mara bushman village. The Maasai are a nomadic people and are known particularly noted for their handcrafted beadwork.



Male members of the tribe are herdsman and use cattle as capital to exchange for their necessities'. The Maasai diet consists of drinking a mix of cow's blood and milk along with other local delicacies.

Most of their food is obtain by young men hunting within the savannah plain with custom made spears. While the men of the tribe are out hunting, the women stay at the village and assist with the construction of their huts.

Young Maasai men leave the tribe at an early age and live off the land in small groups for several years. As they mature, it is the custom for many of them to become warriors as part of their passage to adulthood.

On occasion, many of the young Maasai warriors stay living in the bush and become wild. It is well known that the Maasai tribes' people are very well versed on the local plants. Many species of the local vegetation is utilized for medical treatment of different ailments.

Once you have completed your visitation of the Maasai Village, we will return back to the Lodge for lunch. The remaining part of your afternoon will be at your leisure. At 16:00, we will journey back out to the Reserve for another beautiful late afternoon Safari adventure. All meals will be served at the Mara Sopa Lodge.

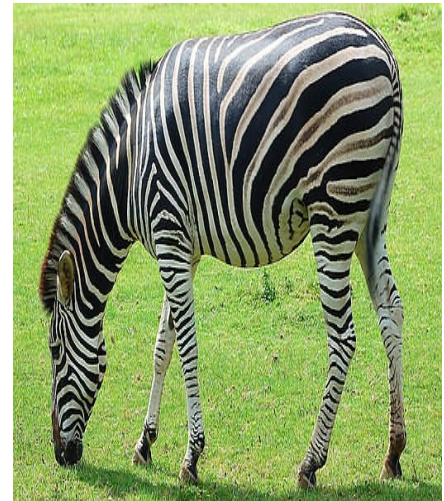
**OVERNIGHT AT MARA SOPA LODGE**

**(B, L, D)**

### **Day 07 – (Masai Mara National Reserve)**

Following breakfast, you will once again begin your morning exciting exploration. As you progress in your journey, you will understand why this Reserve is called the most beautiful places in Kenya.

Upon the completion of your morning adventure, you will return to the Sopa Lodge where you can relax for the rest of morning and early afternoon hours. Perhaps you might want to take a dip in the swimming pool, play a hand of Cards or just get to know some of your fellow Safari explorers. Later in the afternoon, you will return to the savannah in search for members of the BIG 5 game family.



Due to the Sunset being short on the East African coast, you will return to the Lodge  $\frac{1}{2}$  hour prior to the sun setting. However prior to your return, your Once In A Lifetime Safari Wildlife representative will try to position you for the most spectacular Serengeti Plain sunset event you will ever see. All meals will be served at Mara Sopa Lodge.

**OVERNIGHT AT MARA SOPA LODGE**

**(B, L, D)**

### **Day 08 – (Masai Mara National Reserve / Tanzania Border)**

After an early morning breakfast at the Sopa Mara dining facility, we depart the Tented Lodge and begin our 9 hour journey. Your drive will be you to the Serengeti crossing at the Sirari border of Tanzania. Along the way to the Sirari/ Isebania Tanzania border, we will stop for a picnic lunch. Upon arrival at the Tanzania border, you will be transferred to your Tanzania Safari agent.

**(B, L)**

**\*\*VALIDITY –**

### **Kenya Safari Guest Accommodations' and Travel Expense**

US \$ Per Person sharing double room (Includes \$280 USD Adult Kenya Park Fees)  
(Above fare is quoted with a 3.5% cash discount included)

\*\*All quoted rates are based upon 2010 fees and availability at the time of booking. Once In A Lifetime Safari LTD/LLC shall be held harmless for any changes or cancelation of accommodations and or excursions. Prior to receiving final payment, quoted packages rates are not guaranteed and can be modified. Rate structure is based upon 2 Guest sharing Micro-Van.

### **SAFARI COST INCLUDES**

- Full board Double accommodations during Safari adventure in Lodges/Camps as described in itinerary.
- **Exclusive use of a Safari Vehicle (2 Guest minimum)** during your 6 day Safari adventure as described in itinerary.
- Transportation during Safari adventure in a custom made 06-seater safari microbus (07 window seats) with a roof hatch for enhanced game viewing and photography
- Services of an English speaking driver/guide
- **Kenya Game Reserve/Park Entrance Fees**
- **Maasai Village visit**
- **Full Day Nairobi Tour/** Nairobi Giraffe Centre, Authoress Karen Blixen House, Daphne Sheldrick Elephant orphanage
- Bottled mineral water on safari vehicle for use during game drives.
- Safari briefing in Nairobi.

### **NOT INCLUDED IN SAFARI RATE**

- Domestic flights
- International flights
- International departure taxes
- Drinks
- Visa fees
- Tips and gratuities to driver/guide, porters, bar and waiters
- Travel insurance.
- Any other item of a personal nature
- Optional Mara Balloon Flight \$450/person

### **Day 08 – (Masai Mara Reserve / Tanzania Border / Serengeti Plains)**

Once we arrive at the Tanzania Border, you will change Safari drivers and vehicles. After the transfer has been finalized and the immigration process has been completed, we will proceed through the vast Serengeti plains region arriving at Lake Victoria's Speke Bay Lodge. Upon our arrival and for the remainder of the day will be at your leisure exploring this beautiful establishment.



The Speke Bay Lodge is located on the south-eastern shore of Lake Victoria. It is a mere 15 km drive to the Serengeti National Park, and 125 kilometers north of Mwanza.

Speke Bay is part of Speke Gulf, named after the famous explorer John Hanning Speke, who in 1858 discovered Lake Victoria to be the originating

source of the Nile. Embraced by the savannah, the Lodge looks like a small village, stretched out along the shores of the lake. The main buildings and luxury accommodation are round in form, built to perfection, painted white and thatched with a grass roof in the traditional style of the local tribe, the Sukuma.

Since the Lodge is outside but close to the Serengeti National Park, it is the ideal place to start your Tanzania safari adventure. For your pleasure, excursions in boats and on mountain bikes are offered, so you can truly experience Africa. Other adventurous options include fishing for Tilapia from the beach or just looking for exotic birds and enjoying the peacefulness of the Lodge's 100 hectares of savannah. A wonderful dinner will be served in the lodge dining facility.

**OVERNIGHT AT SPEKE BAY LODGE**

**(D)**

### **Day 09 – (Serengeti Plains)**

Following your hearty breakfast at the Speke Bay Lodge, you will be joined by a local guide to embark on a guided fishing village tour. During your venture, you will observe the local fishermen fishing far out on the Lake along with the local women toiling in the fields.

As you stroll across the beach area, you will find Egrets, brightly colored Kingfishers and different types of golden yellow weavers. At the village, you will be able to view fishing boats returning from their days catch. While the fishermen unload their day's harvest, the fierce bargaining will begin with the fish traders. The primary goal of the local is to ensure they receive top dollar for their hard day's work. Following the visit to the fishing village, you will return back to the Speke Bay Lodge for a wonderful mid-day lunch.

After completing lunch, we will check-out of the Speke Bay Lodge and embark on our journey through the vast Serengeti, eventually arriving at the Kijereshi Tented Camp.



Besides the natural attractions, Kijereshi Tented Camp offers a total of 12 Tents set in an area of green Lush plains, surrounded by indigenous trees. The facilities also include a restaurant which serves an excellent international cuisine, buffet and table d'hote, a barbecue area and pool side's snack bar.

It also excels in an extremely well-stocked bar; along with a very friendly and hospitable staff. For your entertainment, there is TV and wildlife video shows in an enjoyable and delightful atmosphere. Additional features include a spacious lounge which is tastefully decorated in authentic African style, a game room, swimming pool and curio shop. A fantastic diner will be served at the Kijereshi Tented Camp dining facility.

**OVERNIGHT AT KIJERESHI TENTED CAMP**

**(B, L, D)**

### **Day 10 – (Serengeti National Park)**

Subsequent to morning breakfast, your wildlife representative will escort you on a full Safari day

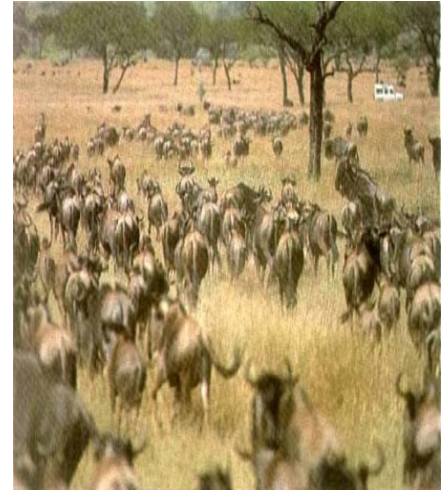
in the Serengeti National Park. This National Park is one of Tanzania's oldest and most popular parks. It has been recognized by the World Heritage organization as the 7th wonder of the World. The Serengeti Plain is also famed for its massive annual migration, where over six million animals will appear on the open plains.

During the migration season, more than 200,000 zebra and 300,000 Thomson's gazelle join the wildebeest's trek for fresh grazing areas.

However, even when the migration is at its minimum, the Serengeti Plain offers the best game-viewing regions in Africa. You will observe great herds of buffalo, smaller groups of elephants, giraffes, eland, topi, kongoni, impala and Grant's gazelle. For your enjoyment, at the mid-day hour your Safari guide will serve a unique picnic lunch.

After the completion of each afternoon game drive, your guide will bring you back to the Kijereshi Tented Camp so you can relax and have a delicious evening diner.

**OVERNIGHT AT KIJERESHI TENTED CAMP**



(B, L, D)

**Day 11 – (Serengeti National Park /Ndotu Plains)**



the Lake Masek Tented Camp.

This luxury tented camp is located by the shores of Lake Masek in Ndotu. It is primarily situated between the vast plains of the Serengeti National Park and the northwest side of the Ngorongoro Conservation Area.

In order for this lodge to remain eco-friendly, it is totally powered by solar electricity. Due to the isolation of this region, water is harvested during the rainy season and collected for use through-out the year. Lake Masek Tented Camp takes pride, that all of the products utilized at the camp are biodegradable to ensure that the environment is kept pristine.

Upon the completion of your breakfast, you will depart the Kijereshi Tented Camp and take a final exploration of the amazing Serengeti National Park. After your morning Safari drive, we will head towards the Ngorongoro Conservation Area.

Along the way to Ngorongoro, we will stop for a delicious picnic lunch. Our ultimate destination for your over-night stay will be at



This unique location is the primary home to the Wildebeest Migration. However no matter what time of year you elect to visit the Lake Masek Tented Camp, all of the big 5 residents can be observed year round. Dinner will be served at the Lake Masek Tented Camp dining facility.

**OVERNIGHT AT LAKE MASEK TENTED CAMP**

**(B, L, D)**

**Day 12 – (Ndutu Plains / Ngorongoro Region)**

Following breakfast, you will once again begin another adventurous drive of this wonderful unique region. During your morning game drive, you will be provided the opportunity to view the variety of nightly hunters returning back to their comfortable resting areas.

Upon the completion of your morning game expedition, you will be escorted back to the Lake Masek Tented Camp for a delicious lunch. After lunch, we will check-out of Lake Masek Tented Camp and start our afternoon drive to the Karatu Village ultimately embarking upon our final destination, Ngorongoro Farm House



Located in the Ngorongoro Highlands which overlooks Lake Eyasi and the Oldeani Volcano, Ngorongoro Farm House is located approximately 10 minutes from the Ngorongoro Crater entrance gate.

This spacious luxury style Bungalow was utilized in the past as an active German farm. Each large room is decorated using local products and provides its guest with an open private bathroom.

Ngorongoro Farm House also has a swimming pool for relaxation after your exciting Safari adventure. For your comfort, the dining area has a large fireplace for cool late evenings and early mornings. The 500 acre working farm is located on the slopes of the crater and features a 6 acre organic vegetable garden. Currently, the Ngorongoro Farm

House has many chickens and milking cows providing fresh eggs and milk.

This unique establishment offers fresh grown coffee originating from its 15 acre coffee plantation. Your evening dinner will be provided in the wonderful Ngorongoro Farm House dining facility.

**OVERNIGHT AT NGORONGORO FARM HOUSE**

**(B, L, D)**

**Day 13 – (Ngorongoro Crater)**

After your morning breakfast at the Ngorongoro Farm House, we will drive to the edge of the amazing Ngorongoro crater. Upon our arrival, you will be escorted to the floor of this amazing crater for a wonderful sightseeing tour. Approximately at noon, we will stop at a wonderful location for delicious picnic lunch.

Following lunch, you will continue to explore this very exotic area. If weather permits, we hopefully will be able to view the most wonderful avian wildlife that the area has to offer. Most

of the variety of bird's in Ngorongoro are seasonal and are influenced by the ratio of soda water versus fresh water.

It has been noted that soda water is the largest expanse of water found in Lake Magadi which is located on the crater floor. The lake is alkaline due to deposits of volcanic ash thrown out by surrounding volcanoes.

Ngorongoro crater also supports up to 25,000 large mammals. Many Grazing species dominate the region, especially zebra and wildebeest.

Other species which accounts for almost half of the animals in the region are gazelle, buffalo, eland, hartebeest and wart hog. Giraffe mostly avoid the region due to the insufficient food source at tree level.

Along with the Giraffe, Topi are also scarce because they compete directly with wildebeest. An odd feature of the crater is the elephants which are almost exclusively bulls. Breeding herds comprising of large numbers of females and young with a few attendant older males are probably unable to find sufficient quality food in the crater.



At 16:00 and after your exploration of Ngorongoro, we will start our journey out of the crater and return back to Ngorongoro Farm House for another delicious diner and evening under the Tanzania stars.

**OVERNIGHT AT NGORONGORO FARM HOUSE**

**(B, L, D)**

**Day 14 – (Ngorongoro / Arusha Town)**



Following a leisurely morning breakfast at the Ngorongoro Farm house, we will start our journey back to Arusha Town. The drive to Arusha Town will take approximately 4 hours with our arrival time around the lunch time hour.

Upon your arrival in Arusha Town, your Safari agent will escort you to the wonderful Arumeru River Lodge for lunch and a relaxing afternoon. Later in the evening you can visit the dining facility for an enjoyable evening diner at the

wonderful Arumeru River Lodge.

**OVERNIGHT AT ARUMERU RIVER LODGE**

**(B, L, D)**

**Day 15 – (Arusha Town)**

You will be served your final breakfast at the Arumeru River Lodge. Based upon your departure time, you might elect to continue the use of your room and have lunch at the lodge on your own private account.

At 1800hrs or based upon your international flights departure time, you will be transferred to Kilimanjaro International airport for your flight home and where your Tanzania Safari agent will bid you farewell.

(B)

END OF SERVICE...

**\*\*VALIDITY –**

### **Tanzania Safari Guest Accommodations' and Travel Expense**

US \$ Adult per Person Sharing Double room  
(Above fare is quoted with a 3.5% cash discount included)

\*\*All quoted rates are based upon availability at the time of booking. Once In A Lifetime Safari LTD/LLC shall be held harmless for any changes or cancelation of accommodations and or excursions. Prior to receiving final payment, quoted packages rates are not guaranteed and can be modified. Rate structure based upon 2 Guest exclusive use of a 4x4 Landcruiser for Tanzania portion of Safari.

#### **TANZANIA SAFARI & ZANZIBAR COST INCLUDES:**

- Full board accommodation during Safari adventure in Lodges/Camps as described in itinerary.
- **Exclusive** use of Safari Vehicle during your 8 day Tanzania Safari adventure as described in itinerary (Minimum 2 Passengers).
- Utilization of a 4X4 Landcruiser for Tanzania Safari expedition providing a enhanced game viewing and photography
- Services of an English speaking driver/guide
- **Game Reserve/Park Entrance Fees**
- Bottled mineral water on safari vehicle for use during game drives.
- Safari briefing in Tanzania

#### **NOT INCLUDED IN SAFARI RATE:**

- International flights
- International departure taxes
- Drinks
- Visa fees
- Tips and gratuities to driver/guide, porters, bar and waiters
- Travel insurance.
- Any other item of a personal nature