



Once In A Lifetime Safari LLC
8574 119th St N
Seminole Fl 33772 USA
Telephone 727-415-3449
Info@onceinalifetimesafari.com

ONCE IN A LIFETIME SAFARI
ITINERARY
4 DAY RWANDA – 10 DAY KENYA

Day 01 - (Nairobi)



Upon your arrival at the Jomo Kenyatta International Airport in Nairobi and after clearing customs and immigration formalities, you will be met by a Once In A Lifetime Wildlife Safari Representative. Our agent will transfer you to the Nairobi Safari Club for a relaxing overnight stay in Nairobi.

OVERNIGHT AT NAIROBI SAFARI CLUB

Day 02 - (Nairobi / Kinigi-Volcanoes)

Optional Kigali City tour/Priced separately from Gorilla Trek (USD /person)

After an early morning breakfast and approximately at 6:00, your Once In A Lifetime Safari agent will transfer to the Jomo Kenyatta International Airport. Your Kenya Airways flight KQ476 will depart from Nairobi at 7:45AM. The flight to Kigali will take approximately 1 hour and 35 minutes.

At 8:10 (Kigali time) you will be met and greeted by your Rwanda driver/guide. As an option and based upon your arrival time, your driver/guide can arrange a visit of Kigali city. This city tour would include visiting the Genocide Memorial centre at Gisozi.

Following your city tour or after your arrival into the Kigali International Airport, you will be transferred to Kinigi which is located at the foothills of the Volcanoes. Your over-night stay and evening dinner will be served at the Kinigi Guest House.

OVERNIGHT AT KINIGI GUEST HOUSE



(B, D)

Day 03 - (Kigali / Gorilla Trekking)



After breakfast at the Kinigi Guest House dining facility, you will depart for the headquarters of the National Park where your driver/guide will assist you with the governmental permitting formalities.

Following the documentation/permitting process, you will meet your Gorilla trekking ranger guide(s) for a briefing about the

greatest animal experience ever!

Your gorilla trekking visit will entail an exciting 3 - 4 hour expedition through this wonderful forest. As you journey through the Gorilla habitat, you will experience enchanting vegetation which weaves through overhanging vines, along with moss-covered Hagenia trees and giant Lobelias which thrive in the tropical climate.

As your trek progresses, you will see why it is so vital to have experienced trackers that will guide you through this expanse. Many of these guides have spent their entire lives living in or close to the forest of this wonderful National Park.

During your adventure, you may spot golden monkeys or see a buffalo, bush duiker and a wide variety of bird life. But one of the most wonderful moments and the greatest wildlife experiences on earth will be spending an hour with the gentle giant gorillas as they go about their daily life, feeding, playing, resting, and raising their young.



At the end of your visit you will understand what kept conservationist Dian Fossey living in this same forest for 18 years protecting these wonderful animals. Following Gorilla trek, you will be transferred to Kigali.

On your journey back to Kigali, several stops will be made to admire the beautiful scenery of Rwanda which has over thousand hills!

Upon your arrival into Kigali, you will be transferred to the Hotel Chez Land for your over-night stay and a

delicious dinner.

OVERNIGHT AT HOTEL CHEZ LANDO

(B, L, D)

Day 04 - (Kigali / Nairobi)

Following lunch, you will be picked up at the Hotel Chez Lando and be transferred to the Kigali Airport for your Kenya Airways flight Q442 which departs at 15:45 with an arrival time into Nairobi at 18:15.

Upon your arrival into the Jomo Kenyatta International Airport, you will be once again met by a

Once In A Lifetime Safari agent. After clearing immigration and customs, your agent will transport you back to the Nairobi Safari Club for your over-night stay.

OVERNIGHT AT NAIROBI SAFARI CLUB

(B)

****VALIDITY –**

Rwanda Gorilla Trekking Guest Accommodations' and Travel Expense

US \$ Adult per Person Sharing Double room

(Above fare is quoted with a 3.5% cash discount included)

****All quoted rates are based upon availability at the time of booking. Once In A Lifetime Safari LTD/LLC shall be held harmless for any changes or cancelation of accommodations and or excursions. Prior to receiving final payment, quoted packages rates are not guaranteed and can be modified. Rate structure based upon 2 Guest sharing transportation vehicle.**

Transfer Expense

Jomo Kenyatta International Airport to the Nairobi Safari Club: US\$

Nairobi Safari Club to Jomo Kenyatta International Airport: US\$

Jomo Kenyatta International Airport to the Nairobi Safari Club: US\$

Air Flight Expense

US \$ Adult per Person (Nairobi - Kigali Round trip as described in itinerary)

Prices Include

- Safari car for the itinerary stated
- An English speaking safari guide
- Accommodation on a shared basis
- Park/entrance fees
- One Gorilla permit
- On safari prices cover full board
- 18% VAT tax

Price does not include

- Airfares to Uganda
- Entry visas and airport taxes
- Travel insurance
- All personal expenditures such as tips, telephone calls, laundry and drinks
- Activities such as mountain climbing, fishing and other specialist activities will attract an extra charge where not stated

Day 05 – (Nairobi Tour of Giraffe Center and Bomas)

++Optional Nairobi City tour priced separately from Kenya Safari (USD \$/person)

Following breakfast (approximately 9:00AM); we will depart the Nairobi Safari Club for a day long exciting visit within the city of Nairobi. During the 9:00 hour, we will visit the main areas of interest in the heart of Nairobi city.

These areas will include the colorful market and shopping bazaars, the historic areas such as the parliament buildings and Mausoleum. As you progress through this historical city, we will stop at a view point where you will capture a clear aerial view of the entire City.

At 11:00, we will visit the Daphne Sheldrick Elephant orphanage. A tour of this exotic Elephant sanctuary will shed a powerful insight into the challenges and plight of the mighty Elephant and this fascinating organization.



While viewing these enormous animals, you will find that they are extremely habituated to their surroundings. Our trip will be timed so you arrive at the orphanage for feeding time which is between the hour of 11:00 and 12:00.



Around 12:00, we will travel to the Nairobi Giraffe Centre. This is a sanctuary established to house the rare and beautiful Rothschild Giraffe.

You will be able to partake in the feeding of the giraffes, resident warthogs and have plenty of photography opportunities. You will have approximately one hour to explore this unique centre. Once you have completed your tour of the Giraffe Centre, you will be driven to Mamba Village for a delicious lunch.

The Mamba village is encompassed within a cool and beautiful environment where you will see wild crocodiles, an ostrich farm and view the precious sculptures which are lined all over the Mamba

village. Our visitation to this wonderful place will be for approximately one hour.

Following your visit and lunch, we will drive to the Bomas of Kenya. You will arrive at approximately 14:30 at this unique cultural area of Nairobi. The Bomas (traditional homesteads) reflect Kenya's cocktail of cultures.

This region has been faithfully recreated for visitors to see and feel the actual village life of the local citizens. During your 1 ½ hour visit, you will partake in an entertaining afternoon that will display traditional dances and folk songs from the better known tribes of Kenya.

At 16:00 and after becoming more familiar with the traditional culture of Kenya, you will be escorted to the original home of the famous Danish Authoress Karen Blixen. Ms Blixen was one of the main individuals from the movie Out of Africa.



Visiting this historical home will provide you with a unique opportunity to learn more about this widely respected person. Surrounding her spacious bungalow, are beautiful gardens with spectacular views of Ngong Hills where Blixen boyfriend Denis Finch Hatton remains were laid to rest on May 14 1931.

Once you have completed your Nairobi City tour, your Once In A lifetime Safari Agent will transfer you back to the Nairobi Safari Club for your overnight stay.

OVERNIGHT AT NAIROBI SAFARI CLUB

(B, L)

Day 06 – (Nairobi / Samburu)



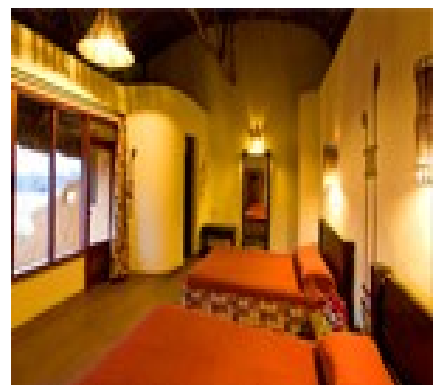
After your early morning breakfast, you will depart the Nairobi Safari Club for Mount Kenya's Samburu National Reserve. The drive to Mount Kenya is 335 km's and will take approximately 5 hours in total. Your morning drive to Samburu will bring you through the fertile Kikuyu land and other points of interest which will be highlighted by your Wildlife Safari guide. Along the way to Samburu National Reserve, we will stop for lunch at a local Kenya cafe'.

Samburu National Reserve was established in 1985. It is mainly comprised of a hilly arid terrain with ravine forests, doum palms, acacia woodland and scrubland. Due to the type of dramatic and rugged landscape,

Samburu brings a different type of Safari experience than the other Kenya Reserves.

Since it is located in a rather remote location of Kenya, it brings fewer tourists and remains abundant in wildlife. Samburu is also noted for its colorful Samburu no-mad tribes located through-out the region.

Samburu has a permanent water supply that's like a magnet for the numerous animal species, which include the big Cats, herbivores and reptiles such as crocodiles. Samburu is one of the few parks where leopard spotting are frequent. Samburu also offers superb bird-watching with numerous weaver birds, the marial eagle and the blue legged Somali ostrich.



Following your afternoon game drive, you will arrive at Sopa Samburu Lodge located in the middle of the park. This wonderful Lodge is where you will enjoy a wonderful dinner and a relaxing evening stay.

OVERNIGHT AT SOPA SAMBURU LODGE

(B, L, D)

Day 07 – (Samburu/Shaba National Reserve)

Following the completion of breakfast at the Sopa Samburu Lodge, you will travel to the Shaba National Reserve. Upon your arrival, you will immediately notice the unique terrain which is comprised of volcanic rock found abundantly through-out the entire region. Shaba's landscape is very similar to the nearby Samburu reserve which has ravine forests, acacia and doum palms.



Shaba is also known for the home of Kenya's two most popular conservationists, George and Joy Adamson. It is here where the movie "To walk with lions" was shot which depicted George Adamson's life and conservation efforts.

During your exploration of this reserve, you will visit the monument dedicated to the late Joy Adamson who died in 1980. As a point of interest, the filming of the movie "Sheena Queen of the jungle" and the third season of the television series "Survivor" was also filmed at this location. During the mid-day hour, you will stop at a unique location to enjoy a delicious picnic lunch. Upon the completion of lunch you will continue your game drive exploring this fantastic Reserve.

As the sun starts to set upon the Savannah, you will return back to the Sopa Samburu Lodge where you enjoy another wonderful evening of dining and relaxation.

OVERNIGHT AT SOPA SAMBURU LODGE

(B, L, D)

Day 08 – (Samburu/Sweetwater's)

After breakfast and your final game drive in Samburu, we will start our journey to Sweetwater's Tented Camp. Following a driving of approximately 3 hour's, we will arrive at this wonderful Camp.

This luxury Tented Camp is set in the heart of a private concession land and is nestled in the slopes of Mt. Kenya. It overlooks a floodlit waterhole offering visitors an unforgettable opportunity to view and shoot pictures of animals in their natural habitat.

During your adventure, you will have the opportunity to observe various Birdlife, Elephants, Buffalo, Baboon, Eland, Silver-backed Jackals, Ostrich, Rhino's and others



exotic wildlife. You will also be visiting the unique chimpanzee sanctuary within the Sweetwater compound.

Following your delicious lunch that will be served at Camp, we will take an afternoon expedition to explore this wonderful region. After the completion of your game drive, we will return back to Sweetwater's so you can relax and enjoy a fantastic evening dinner.

OVERNIGHT AT SERENA SWEETWATER'S CAMP (B, L, D)

Day 09 – (Sweetwater's/Lake Nakuru National Park)

After breakfast, we will depart from the Sweetwater's Tented Camp and start our journey to Lake Nakuru National Park. You will travel south for approximately 3 hours through Isiolo, crossing the northernmost foothills of Mount Kenya, until we arrive at the town of Nanyuki. Here you'll head west to Nyahururu, known to many as Thomson's Falls' which is the home of the 237 foot amazing water fall. During your journey to this beautiful Park, you will have the opportunity to enjoy stunning views of the vast Kenya countryside.



Prior to arriving at Lake Nakuru's National Park, we will stop at the Sunbird Lodge where you will check-in and enjoy a wonderful lunch. Following lunch, your Once In A Lifetime Safari wildlife guide will drive you to the lakebed where you will begin your expedition through this unique National Park.

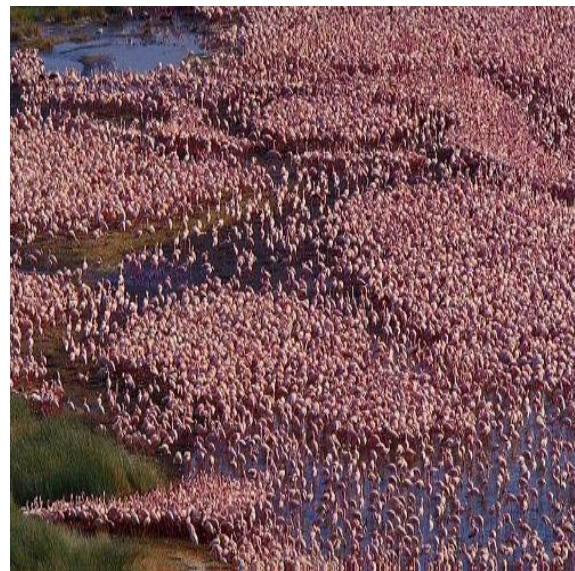
Lake Nakuru is famous for its clouds of flamingos, Black Rhino's, as well its unusual tree climbing Lions. Over 1 million flamingos in the park literally turn the shores of Lake

Nakuru pink. This is a delight for ornithologists, scientists, and wildlife filmmakers.

This Kenya National Park covers 188 square kilometers of land of great ecological diversity - from lake water, woodland, bush grassland, to rocky ridges. Upon your arrival at Lake Nakuru, you will start your exploration of this marvelous Park.

A variety of exotic wildlife can be easily observed through-out the entire region. This wildlife includes Water Buffalo, Leopard, Lion, Rothschild's Giraffe, Black and White Colobus Monkey in the forests and animals like the Eland, Steinbok, Impala, Chandler's Reedbuck, and Dikdik in the Bushland. Finally, Rock Hyrax and the Klipspringer are found on the cliffs and escarpment.

Following your afternoon exploration of the lakebed and the wonderful cliffs of Lake Nakuru, your Once In A Lifetime Safari wildlife



representative will transfer you back to the Sunbird Lodge for a delicious evening diner and your overnight stay.

OVERNIGHT AT SUNBIRD LODGE

(B, L, D)

Day 10 – (Lake Nakuru/Lake Naivasha/Hells Gate National Park)

At 9:00 and after an early morning breakfast at the Sunbird Lodge, you will depart the flamingo fringed Lake and drive approximately 1 ½ hours northward, arriving at Lake Naivasha's Sopa Lodge.



Upon our arrival at the Sopa Lodge, you will check-in and partake in a wonderful mid-day lunch. Following lunch, we will drive a short distance to Hell's Gate National Park.

Hell's Gate has a very unique terrain among Kenya's parks. As you enter the park, you will be allowed to walk unguided across the grounds. During your exploration you will

observe dramatic scenery, looming cliffs, gorges and basalt columns.

As you progress on your adventure, it is common to see lions and leopards lurking behind many corners of the area. This opportunity is why Hell's Gate is one of the most exciting places to visit.

Marking the eastern entrance of Hell's Gate Gorge is Fischer's Tower, one of the park's most popular rock-climbing sites.

During your exotic exploration, you will take a 1 hour exciting boat ride to view the extraordinary Black Rhinos. At around the mid-day hour, your Once In A Lifetime wildlife representative will stop so you can enjoy a wonderful picnic lunch.

Once you have completed your Hell's Gate expedition, you will be escorted back to the wonderful Lake Naivasha Sopa Resort for dinner and your overnight stay.

OVERNIGHT AT LAKE NAIVASHA SOPA RESORT



(B, L, D)

Day 11 – (Lake Naivasha/Masai Mara National Reserve)

After your early morning breakfast at the Sopa Lodge, we will depart Lake Naivasha proceeding southward, turning right at Maai Mahiu ascending up and over the top of the Mau Escarpment. Eventually, we will arrive at Kenya's most prestigious National Reserve, Masai Mara. This adventurous drive is approximately 200 km's and will take 3 ½ hours.



drive you to the Masai Mara Sopa Lodge.

Upon your arrival, you will be provided the opportunity to check-in and enjoy lunch followed by an afternoon game drive. The Masai Mara Sopa Lodge is located on the furthestmost eastern corner of the Maasai Mara National Reserve, near the Ololamutiek Gate. The Lodge totally blends in perfectly with its surrounding hillside landscape; the Maasai people, fabulous wealth of wildlife, bird life, and natural flora to be found in the fabled Masai Mara National Reserve.

During your afternoon exploration of Masai Mara, you most likely will see Cheetahs, Hyenas, Giraffes, Lions, Hippos, Leopards, Jackals, Wildebeests, Gazelles, Impalas, Topis, Hartbeests, Vultures, Eagles, Falcons, Ostriches, Zebras and much more.



Following your afternoon adventure, you will return to the Sopa Lodge for your fantastic dinner and overnight stay.

OVERNIGHT AT MASAI MARA SOPA LODGE

(B, L, D)

Day 12 - (Maasai Mara Village / Masai Mara National Reserve)

After a leisurely breakfast, we will depart the Mara Sopa Lodge facility and travel a short distance to a unique Maasai bushman village. The Maasai are a nomadic people and are



known particularly noted for their handcrafted beadwork.

Male members of the tribe are herdsman and use cattle as capital to exchange for their necessities'. The Maasai diet consists of drinking a mix of cow's blood and milk along with other local delicacies. Most of their food is obtain by young men hunting within the savannah plain with custom made spears.

While the men of the tribe are out hunting, the women stay at the village and assist with the construction of their huts. Young Maasai men leave the tribe at an early age and live off the land in small groups for several years. As they mature, it is the custom for many of them to become warriors as part of their passage to adulthood.

On occasion, many of the young Maasai warriors stay living in the bush and become wild. It is well known that the Maasai tribes' people are very well versed on the local plants. Many species of the local vegetation is utilized for medical treatment of different ailments.

Once you have completed your visitation of the Maasai Village, we will return back to the Lodge for lunch. The remaining part of your afternoon will be at your leisure. At 16:00, we will journey back out to the Reserve for another beautiful late afternoon Safari adventure. All meals will be served at the Mara Sopa Lodge.

OVERNIGHT AT MARA SOPA LODGE

(B, L, D)

Day 13 – (Masai Mara National Reserve/Nairobi)

Once you have completed your breakfast, you will begin your morning exciting exploration. Or, you may partake in an early morning Masai Mara Balloon ride. Based upon whatever option you choose, you will understand why this Reserve is called the most beautiful places in Kenya.



Upon the completion of your morning adventure, you will return to the Sopa Lodge where you have lunch and check-out from the Sopa Lodge.

Following check-out, you will return back to the Masai Mara Reserve for a final expedition prior to your return flight to Nairobi. At approximately 15:15, you will be escorted to the Masai Mara airfield for you will board Airkenya Flight #952 which depart at 16:15.

A Once in A Lifetime agent will be waiting to greet you from your 17:15 arrival at Nairobi's Wilson Airport. Your Agent will transfer you to the Nairobi Safari Club for your over-night stay.

OVERNIGHT AT NAIROBI SAFARI CLUB
(B, L)

Day 14 – (Nairobi/Amboseli National Park)

At approximately 8:00, your Once In A Lifetime Safari wildlife guide will meet you at the Nairobi Safari Club.

You will then start your journey taking you south for approximately 250 kilometers (155



miles) across the beautiful and seemingly never ending - Athi plains and arrive at the colorful border town of Namanga.

Once you turn east, you will be entering Amboseli National Park which is located at the foot of majestic Mount Kilimanjaro, home to a wealth of wildlife but particularly known for its elephants. The drive to Amboseli will take approximately 3 ½ hours.

As you enter the Park, you will notice the snowcapped peak of Kilimanjaro which dominates every aspect of Amboseli. This Park is one of Kenya's most famous National treasures. Amboseli only covers 392 sq km, but despite its small size and its fragile ecosystem, it supports a wide range of mammals (well over 50 of the larger species) and birds (over 400 species). Years ago, this was the locale around which such famous writers as Ernest Hemingway and Robert Ruark spun their stories of big-game hunting in the wilds of Africa.

The snows of Mount Kilimanjaro, white and crystalline, form a majestic backdrop to one the region's most spectacular displays of wildlife - lion, elephant, leopard, rhino, cheetah, buffalo and hosts of plains' game, creating Kenya's most sought after photographer's paradise.



After completing your drive from Nairobi, you will arrive at the Amboseli Sopa Lodge located in the heart of the wonderful Amboseli National Park. Following check in, you will enjoy a delicious lunch served in the Sopa Lodge dining facility.

At approximately 3:00 and upon the completion of lunch, your Once In A Lifetime wildlife representative will escort you on an adventurous afternoon Safari drive. During your expedition, you will visit the nearby water-hole where you will observe an abundant of different wildlife species.

Upon the completion of your exciting afternoon adventure, you will return back to the Amboseli Sopa Lodge. Your fabulous evening dinner will be served in the dining facility. Following dinner you might opt to relax near the open camp-fire and enjoy a conversation with your fellow explorer.

OVERNIGHT AT AMBOSELI SOPA LODGE

(B, L, D)

Day 15 – (Amboseli National Park)

After your hearty morning breakfast at the Sopa Lodge, a full day will be spent exploring this most unique and wonderful National Park. One of the interesting and spectacular facts regarding this park is its abundant and vast number of animal species. During your morning and afternoon expedition, you will see Buffaloes, lions, gazelles, cheetahs, wildebeest, hyena, jackals, warthogs, zebras, Masai giraffes and baboons. Around the mid-day hour you will stop for a fantastic picnic lunch.



Due to the Sunset being short on the East Coast of the African Continent, you will return to the Lodge ½ hour prior to the sun setting. However prior to your return, your Once In A Lifetime Safari Wildlife representative will try to position you for the most spectacular Serengeti Plain sunset events you will ever see.

After you freshen up from your day's adventure, you might elect to relax in the Amboseli Sopa Lodge's lounge area. This will provide you with the opportunity to enjoy a book or play a game of cards prior to your evening dinner.

After dinner, you might once again want to relax next to the open fire pit and discuss your day's exploration with your fellow Safari adventurers.

OVERNIGHT AT AMBOSELI SOPA LODGE

(B, L, D)

Day 16 – (Amboseli National Park / Namanga Border Town)

Once you have completed your early morning breakfast and have checked out from the Amboseli Sopa Lodge, your Safari Representative will start your 4 hour journey to the Tanzania Border town of Namanga. The drive from Amboseli to the Namanga Border town will take approximately 4 hours. Upon your arrival at the Kenya-Tanzania Namanga Border town, your Once In A Lifetime Safari wildlife guide will bid you farewell. **(B)**

End of Service...

****VALIDITY –**

Kenya Safari Guest Accommodations' and Travel Expense

US \$ Per Person sharing double room (Includes \$580 USD Adult Kenya Park Fees)
(Above fare is quoted with a 3.5% cash discount included)

Air Flight Expense

Airkenya flight - Masai Mara Airfield to Nairobi's Wilson Airport: \$

Transfer Expense

Wilson Airport to Nairobi Safari Club: USD \$ (Min 2 passengers)

****All quoted rates are based upon 2010 fees and availability at the time of booking. Once In A Lifetime Safari LTD/LLC shall be held harmless for any changes or cancellation of accommodations and or excursions. Prior to receiving final payment, quoted packages rates are not guaranteed and can be modified. Rate structure is based upon 2 Guest sharing Micro-Van.**

SAFARI COST INCLUDES:

- Full board Double accommodations during Safari adventure in Lodges/Camps as described in itinerary.
- **Exclusive use of a Safari Vehicle (2 Guest minimum)** during your Safari adventure as described in itinerary.
- Transportation during Safari adventure in a custom made 06-seater safari microbus (07 window seats) with a roof hatch for enhanced game viewing and photography
- Services of an English speaking driver/guide
- **Lake Naivasha 1 Hour Rhino Boat ride**
- **Kenya Game Reserve/Park Entrance Fees**
- **Maasai Village visit**
- Bottled mineral water on safari vehicle for use during game drives.
- Safari briefing in Nairobi.

NOT INCLUDED IN SAFARI RATE:

- ***Nairobi City Tour USD \$160 per person***
- Domestic flights
- International flights
- International departure taxes
- Drinks
- Visa fees
- Tips and gratuities to driver/guide, porters, bar and waiters
- Travel insurance.
- Any other item of a personal nature
- **Mara Balloon Flight USD \$450/person**